



PSP is a nationwide network of pump station professionals serving the golf industry.

With thousands of pump station installations, this team can provide installation, start-up, maintenance and service for all your pump station needs.

PSP network provides sales and service for the MPC and other MCI products.

THE MOTOR CONTROLS ADVANTAGE

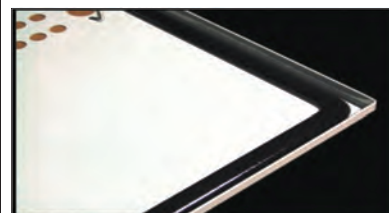
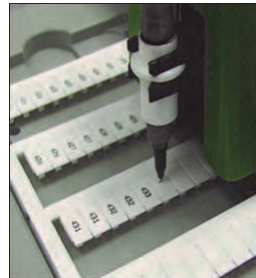
Motor Controls Inc. has been designing and manufacturing engineered control solutions since 1980. The company has been built on a foundation of meeting and exceeding our customer's expectations.

Quality as our top priority, we are certified to:

- ISO 9001:2008
- UL508a,698A
- CSA
- UL 50
- UL 1640

MCI has supplied over **200,000** UL listed panels to our global customers.

In our **105,000-square-foot facility** in Dallas, we operate one of the largest control panel factories in the industry. This provides Motor Controls the capacity to meet and exceed the expectations and volume requirements of major companies.



To complete the package, Motor Controls offers something most UL control panel manufacturers can't: the added capability to design and manufacture UL electrical enclosures. We provide standard and custom enclosure designs, as well as offering customers the economy and practicality of modified standard enclosures to fit specific applications.



Motor Controls Incorporated
 2818 Virgo Lane
 Dallas Texas, 75229
 1-800-735-1097
www.motorcontrols.com
mciwater@motorcontrols.com



PUMPED with high performing hardware

Reliable
 Efficient
 Flexible



pump control systems

MPC Pump Station Control System

Introducing our new line of configurable multi-pump control system with optional cloud based remote monitoring and notifications with any web enabled smart device such as a tablet or cell phone.

The MPC upgrades your existing pump station with control operation that is designed to maximize energy savings and allow you to select the most efficient operation for your course. The MPC can provide you with constant updates on your pump station status and notify you of a situation requiring immediate attention.

Leading Edge Technology

- Latest generation of Allen Bradley Compact Logix PLC
- Allen Bradley 10" PanelView Plus Color Touch Screen
- Monitor & Control from any PC, Smart Phone or Tablet

Ease of Operation

- Multiple configurations to comply with power company restrictions
- Six modes of operation to ensure continuous watering
- Protective safeties in all modes
- Operation set points are easily changed from HMI dashboard

Flexible Setup

Touchscreen entry for pump station setup:

- Pump station types
- Pump types and sizes
- Filtration systems
- Fertigation systems
- Water feature and transfer pumps
- Lake Level controlled by probes or by a level transducer

Operation Intelligence

- Available parameters to fine tune your system and give you the tools to monitor and make changes based on current and future demand and conditions
- Industry leading event and alarm logs that provide you with a detailed system snapshot of what the system and pump status were at the time of alarm event
- Flow data log available for three years
- Intelligent line fill programming allows your system to recover from a power interruption and reduces any impacts to your underground piping system.



MPC Where Control meets Performance

FEATURES



- Compact Logix PLC
- PanelView Plus HMI
- Contactors & SS/OL



- All Main Pumps Start on VFD
- 122 Deg F Rated
- 3.5% DC Link Reactor
- Optional 6 Year Warranty
Including Lightning Strikes



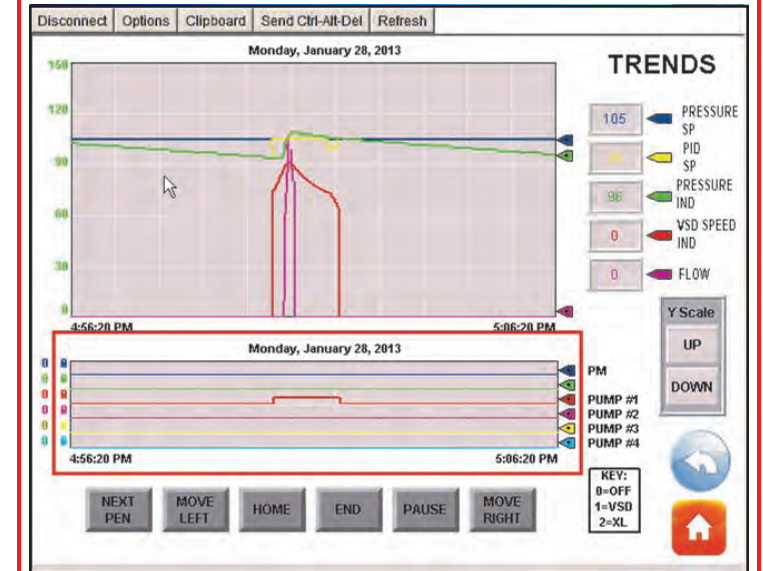
Powder Coat Finish

- 5 Stage Pre-Treatment
 - Rust inhibit w/iron phosphate treatment
- Construction
- UL Type 3R,4 & 4X SS or AL
 - 3 Point Latches

STANDARDS

- Main Fused Disconnect
- Service Entrance Rated
- 100 kA SCCR
- High Speed Fuse Protection VFD
- Surge Arrestor
- Phase Monitor
- Pump Safeties
- Lake Level Control
- Filter Control

10" TOUCHSCREEN



WEB Based Remote Monitoring

- Access all Screens
- Monitor & Control Pump Station
- Modify Settings
- Text & Emails for Alarm and Data Reporting
- Remote Program Upgrades



“Meeting our Customer’s requirements, every requirement, every time”

“Meeting our Customer’s requirements, every requirement, every time”